

INFRA RED BEAM BARRIER

An external infra red beam detection system available in virtually any size with a range of 150 metres and specified throughout the world as the premier choice for perimeter protection in a variety of commercial, governmental and domestic applications.



The securing of attractively landscaped or environmentally sensitive areas calls for an intruder detection system which is discreet, highly effective and free from false alarms.

On the occasions when it is neither aesthetically desirable nor cost effective to secure large expanses of open ground with either fencing or walls, PERIMBAR's advanced electronics can be tailored to provide the ideal solution.

PERIMBAR is an external infra red beam system which utilises attractive and robust towers containing transmitters whose energy is collected by receivers up to 150 metres away. When an intruder interrupts these beams an alarm condition is caused.

Where a physical barrier already exists PERIMBAR may be effectively deployed either on top of or just inside the perimeter and has many features which make it a secure choice for these situations.

Unlike passive detectors it cannot be covered, masked or inadvertently blocked without causing an alarm condition.

Any attempt to scale the unit will immediately be detected either by the sensitive internal beams being breached or the cleverly designed anti-climb top cap being activated.

Where the size of the site or the risk demands a precise fix of the intruder's position, then the revolutionary new LUNAR system is the perfect solution.

LUNAR uses the same principles of detection as PERIMBAR and in addition gives a profile of the intruder which, coupled with the location of the security breach, assists in identifying the cause and degree of potential threat.

PERIMBAR

DETECTION SYSTEM



"PERIMBAR has long been the preferred beam barrier system. LUNAR adds intelligence to an already superb product, and gives the user a cost effective and highly secure perimeter detection solution."



Secure in the knowledge
of experience

Why point to point beams?

Traditional Passive Infra Red detectors rely on having an uninterrupted view of the protected area, they can only detect what they can 'see'. This in itself is not a problem but it does mean that if the field of view is restricted, as can easily happen when stock or lorries are moved around, the level of security is reduced, as what ever lies beyond the restriction is unprotected. This simply can not happen with point to point beams, any obstruction of the unit is immediately notified to the user.



Higher performance always available

PERIMBAR is available with a signal processor module which provides outputs for system performance to give early warning of fog or vegetation obscuring the lenses, any pair of beams blocked which would indicate a high probability of an attempted intrusion and bottom beam blocked which may be a 'crawl through' type of attack.

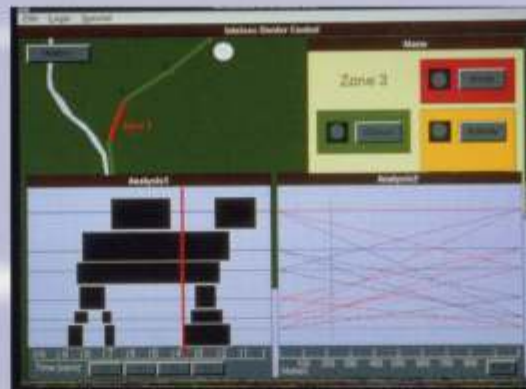
The module also gives warning if any one beam is blocked, which is probably caused by a fault, and also indicates attempted climb over or lid removal.

Technically superior

All infra red external beam systems have the advantage of being immune to masking and offer cost effective external detection. PERIMBAR however goes way beyond this with its unique SYNCLINK and optional sync line monitor. SYNCLINK means that individual transmitters will only respond to their own receivers. This avoids interference between units allowing far closer beam spacing, it also provides the solution for irregularly shaped perimeters. For greater security it prevents an additional transmitter being inserted to overcome the system. It also uniquely allows a transmitter at the bottom of a tower to be directed at a receiver at the top of another tower to overcome the effects of undulating ground. In other words, PERIMBAR offers significantly higher security and is the only system capable of working effectively with uneven ground and unusually shaped compounds. Sync line monitoring adds another level of security by generating an alarm condition if the SYNCLINK signals are interrupted.

PERIMBAR is also unique in that it is available in virtually any size from 1 metre upwards, columns as tall as 10 metres have been successfully installed. This feature coupled with a special anti-climb over top cap renders PERIMBAR many times more secure than its competitors.

PERIMBAR's other main advantage over its imitators is its modular construction which allows beams and their associated heaters and other modules to be fitted in virtually any configuration allowing the user to space the units for maximum security. Radiovisor has delivered PERIMBARs with beams every 150 mm - unmatched by any competitor.



In common with all other Radiovisor infra red beams PERIMBAR has exceptional immunity to false alarms caused by sunlight, air turbulence, objects moving adjacent to it and the effects of RFI.

Lunar- the next generation

Lunar represents a quantum leap forward in effective perimeter security. For the first time an infra red beam barrier system is able to pinpoint the location of an intruder and indicate this on a PC based site plan. This is achieved by every receiver seeing all transmitters and forming a matrix from which positioning calculations can be made. The other revolutionary benefit that this brings is the ability to identify the profile of the intruder. The picture above clearly shows a 'camel' entering a protected area!

On-site security staff can now decide on an appropriate level of response depending upon whether the intruder is a cat, a camel or a tank! This enables a far more efficient deployment of expensive human resources.

On screen engineering diagnostics also give advanced warning of various aspects of system performance and allow appropriate maintenance or repair action to be taken.



Every PERIMBAR that leaves the factory is built by hand, because of this delays can sometimes occur. For those situations where units are needed quickly, pre-built 4 beam, 2 metre towers with the full systems performance module are always kept in stock.

Easy alignment

As with all Radiovisor products, alignment is simplicity itself, using the compact alignment lamp and voltage outputs from the beams.



Customised service

Because most PERIMBARs are made to order, special requirements can nearly always be accommodated. The units shown above were fitted with mains lighting to match the remainder of the site.



PRODUCT SPECIFICATION

External range 0.5 to 150 metres

Internal range 0.5 to 200 metres

Beam transmitted and received angle - 5°

Horizontal adjustment - 200°

Vertical adjustment - 90°

Input voltage - 10.5V - 15VDC

Heater current at 12VDC - 125mA

Heater current at 50VAC - 60mA

Beam width - 40mm

IR wavelength - 880nm

IP54 rated

Temperature range -20°C to +55°C (with heaters)

Relative humidity - 10% to 90%

Response time - >20mS - <40mS

Alarm dwell - 800mS

Output relays - 24V - 1A

Dimensions - 112mm x 130mm x specified height

Cable entry - 4 x PG16 cable glands

A number mimic panel options are available, please ask for current specifications

POWER SUPPLIES

FA1-23* - 230VAC/50VAC 8A PSU for powering up to 16 columns

FA1-24 - 230VAC/13.7VDC 1A PSU for powering 1 column (15VAC 1.5A to power heaters)

**This transformer allows all columns to be powered at a safe working voltage and significantly reduces cabling costs*

Due to our policy of ongoing product development we reserve the right to change specifications without prior notice.

Further information on Geoquip Systems
can be obtained from:-

GEOQUIP LIMITED

Kingsfield Industrial Estate, Derby Road
Wirksworth, Matlock, Derbyshire DE4 4BG
United Kingdom

Tel: +44 1629 824891 Fax: +44 1629 824896

Website: www.geoquip.com E-mail: info@geoquip.com

